

**FILTER CLEANER  
MODEL - 10L**

**OWNERS MANUAL**

## TROUBLESHOOTING

No	Problems	Possible causes	Solutions	Remarks
1	No Vibration (Cavitation)	A. Power supply not connected. B. Fuse broken / blown. C. Cable short circuit D. Transducer short circuit E. PCB Board Broken F. Other reason	A. Check and plug in power cord. B. Check the fitted power supply and change the same specification fuse. C. Replace with a new cable. D. Contact our after-service engineer. E. Contact our after-service engineer. F. Contact our after-service engineer	
2	Time control failure	A. Timer failure B. Other reasons	A. Replace timer or digital control panel. B. Contact our after-service engineer	
3	No heating	A. Heater power switch bad linkage B. Fuse burn out. C. Heating pad burn out. D. Digital display board out of control E. Other reasons	A. Check heating plug connection. Check outlet line with multimeter: if OK and resistance value is few hundred OHMs. B. Change the same specification fuse. C. Replace the bad heating pad if open circuit. D. Check the broken part and change. E. Contact our after-service engineer	Suggestion 110-130°F
4	Temperature control failure	A. Thermostat loosens. B. Thermostat tube broken. C. Digital display out of control D. Other reasons	A. Fasten the thermostat header. B. Replace thermostat. C. Check the broken part and change it D. Contact our after-service engineer	
5	Not cleaning well	A. Too high too low liquid surface B. Too high too low temperature C. Not suitable cleaning liquid D. Other reasons	A. Adjust liquid into the best surface. B. Adjust temperature into the most fitted. C. Stop and switch off power supply, replace suitable liquid after the previous liquid cools down D. Contact our after-service engineer	Suggestion 110-130°F
6	Other Problem		Contact support@nashsolutions.com	

- **Recommended Cleaning Time / Temperature**

Moderate soiled - 4 minutes / 110°F / 43°C

Heavily soiled - 5 minutes / 120°F / 49°C

Extremely soiled - 6 minutes / 130°F / 54°C

NOTE: Some filter oils are harder to remove than others. Increased cleaning time or temperature may be required.

- **Straining, Rinsing, & Drying**

Once the filter is clean, allow the filter to strain all the excess liquid / filter cleaning solution off using the basket provided. Once drained, squeeze the remaining liquid out. Finally rinse with cold water and allow to dry.

- **Power OFF**

Press "ON/OFF" to stop operation. Unplug the power cord or flip the power switch on the rear to the "O" off position when the filter cleaner is not in use.

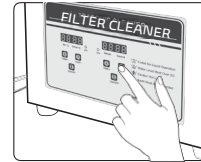
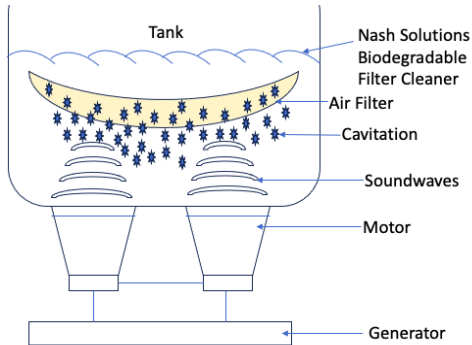
## **Solutions For The G.O.A.T**

Thank you for purchasing Nash Solutions Filter Cleaner. This manual will explain the necessary precautions for proper use. Before operation, please read this manual for a full understanding of operating procedures.

Please keep the manual for future reference. **Do not modify this product. Modification of this product will void any warranty or replacement.** Please note that the machine control panel will be affected by organic solvents, strong acids, and harsh chemicals. This product may cause some interference to some electromagnetic communication devices, such as mobile phones, Bluetooth, etc. when in use.

## THE BASIC PRINCIPLE OF NASH FILTER CLEANING DEVICE

The Filter cleaner uses energy in the form of sound waves to create millions of tiny, microscopic bubbles. The technical term for this process is called cavitation. With cavitation and the Nash Solutions Biodegradable cleaning solution, works its way into holes, crevasses, and hidden cavities loosening dirt on all surfaces that the solution touches. The cavitation occurs thousands of times per second to scrub contamination gently yet thoroughly from the air filter. When you lift the air filter out of the cleaner, it's microscopically clean. You will notice some dirt and debris will remain on the surface of the air filter that is caused from static gasses created during the cleaning process. As soon as you rinse the filter the static charge will dissipate, and the remaining dirt will wash away.

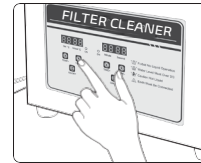


## Start Filter Cleaning

For first time operation, time display will show setting time at random. Press time key "TIME+" one time. The setting time on the display increases by 1 minute correspondingly. Touch "TIME-" key to decrease time setting by 1 minute. Touch ON/OFF button after setting the time. The ultrasonic indicator turns red and the machine starts working based on specified parameters. Meanwhile the timer will begin to count down and stop once the timer shows "00:00".

## Heat

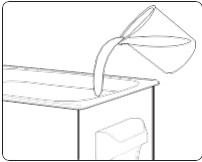
For first time operation, the temperature on the display will be random. Actual temperature is room temperature or the temperature of the liquid in the container. Touch "TEMP+" once to increase temperature by 1°F; Touch "TEMP-" once to decrease temperature by 1°F. Temperature display shows setting temperature and actual temperature when heater is working. The heater indicator goes off when actual temperature reaches set temperature.



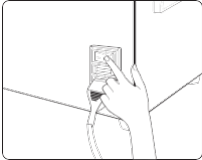
## OPERATION STEPS

### ■ Before Operating Your Filter Cleaner

#### Add cleaning liquid/solution.



Fill the tank with Nash Solutions Biodegradable Air Filter Cleaning liquid until your filter is submerged. **DO NOT EXCEED** the max line. **DO NOT use flammable liquids such as alcohol, gasoline, or any liquids/solutions with a flash point. Heating is strictly forbidden with flammable liquids!** Vibration for a long time will cause the temperature of liquid to increase. **CAUTION: FIRE!**



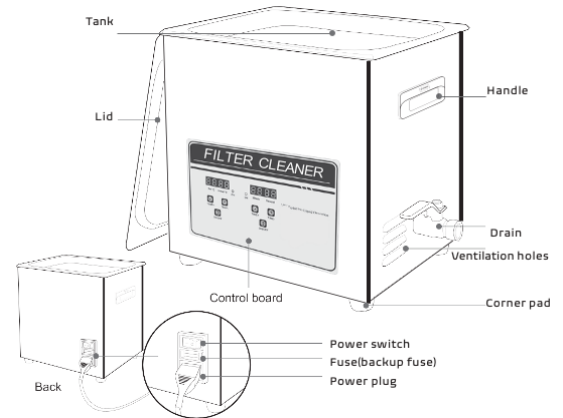
#### Main power

Plug the cleaner into a grounded outlet. Turn on the power switch, located on the rear side. Now the filter cleaner is powered on. ("O" is output/off, and "I" is input/on)

## CONTENTS

1. Filter Cleaning Machine
2. Power cord
3. Lid
4. Hose
5. Hose Clamp
6. Hope Coupling
7. PTFE Tape
8. User Manual

## PRODUCT DRAWING & INDICATION



## READ BEFORE USE

1. Carefully unpack the Filter Cleaning Machine and remove all traces of packaging.
2. Visually inspect the cleaner for parts that may have become loose or damaged during transit.
3. Place the Filter Cleaning Machine on a flat clean surface where the cooling fans will receive adequate ventilation.
4. Ensure the drain tap is in the closed position.
5. Ensure the power supply is rated correctly before the power cable is connected.
6. Ensure the ground / earth wire is connected before use.
7. Do not operate if the tank is empty, this will cause damage to the generator / motors.
8. If using the heating element, the container liquid level must be 2/3<sup>rd</sup>s full.
9. Place the lid on the machine to reduce noise and pay attention to liquid and steam while the lid is not being used.
10. To avoid overflow, do not relocate / move the machine with fluid in the tank.
11. Use Nash Solutions Biodegradable Air Filter Cleaner. **Strong acids or flammable cleaners are forbidden. Under no circumstances DO NOT heat when using flammable liquids such as alcohol, gasoline, etc. Heating is strictly prohibited when using any liquids with a flash point.** Extended vibrations for a long period of time will also cause the temperature of liquid to increase. **CAUTION: THIS CAN CAUSE FIRE!!**
12. Do not use the machine in severe environments. A place where temperature changes rapidly; A place where humidity is too high; A place where vibration or impact is strong; A place where corrosive gas or dust exists; A place where water, oil, or chemicals splash; A place where explosive and or flammable gas exist.

NASH SOLUTIONS – FILTER CLEANER